

estate agents **auctioneers**

**hollis
morgan**



34 Oldfield Road, Hotwells, Bristol, BS8 4QQ

£385,000

Hollis Morgan - A spacious two story Victorian family home which requires modernisation. Garage. No Onward Chain.

- Victorian Family Home
- Renovation Required
- Huge Potential
- Hotwells Primary
- Gas Central Heating
- Garage
- Garden
- No Onward Chain

Description

A fabulous opportunity to acquire a traditional bay fronted Victorian terrace in a popular location.

Location

Hotwells with its charming mix of architecture from George Tully's Dowry Square dating from 1720 to the maritime influence of the nearby Harbourside district, Hotwells is amongst the most sought after locations in the City. Excellent amenities with independent shops, boutiques, cafes, bars and restaurants can be found in nearby Clifton Village, Whiteladies Road and the Triangle. Brunel's Clifton Suspension Bridge provides a gateway to the Ashton Court Estate with its woodlands, mountain bike trails and walks whilst there is excellent access to the exciting Harbourside district, The City Centre and Temple Meads.

Living/Dining room

Double glazed bay window to front elevation, fireplace with stone surround. Radiator.

Kitchen

Wall and base units, stainless steel sink and mixer tap, radiator. Double glazed window to side elevation.

Utility room

Plumbing for washing machine, workspace, sink. door to rear.

Bathroom

Electric shower over bath, w/c, basin and radiator.

Bedroom 1

Double glazed bay to front elevation, integrated storage. Radiator.

Bedroom 2

Ample storage space, double glazed window to rear. Radiator.

Bedroom 3

Double glazed window to rear. Radiator.

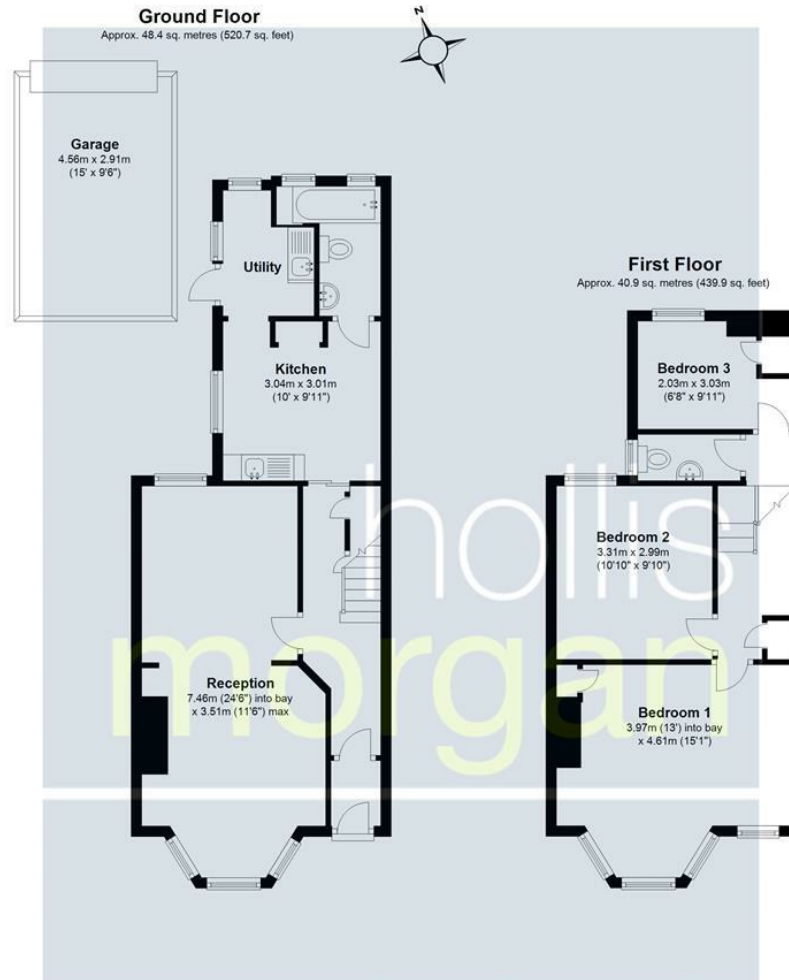
Garden

Enclosed garden with gravelled area and rear access.

Garage

Accessed via Charles Place.





Total area: approx. 89.2 sq. metres (960.6 sq. feet)

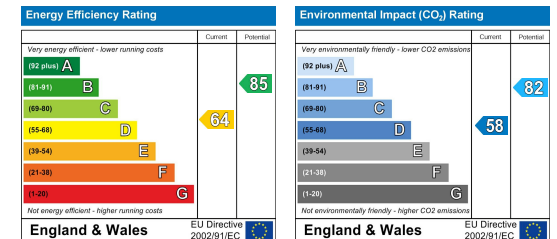
Illustration for identification purposes only, measurements are approximate, not to scale.

Floorplan Produced by Westcountry EPC
Plan produced using PlanUp.

TEL | 0117 933 9522 | 9 Waterloo Street, Clifton, Bristol BS8 4BT

www.hollismorgan.co.uk | post@hollismorgan.co.uk

Hollis Morgan Property Limited, registered in England, registered no 7275716
Registered address, 5 Upper Belgrave Road, Clifton, Bristol BS8 2XQ



hollis
morgan
